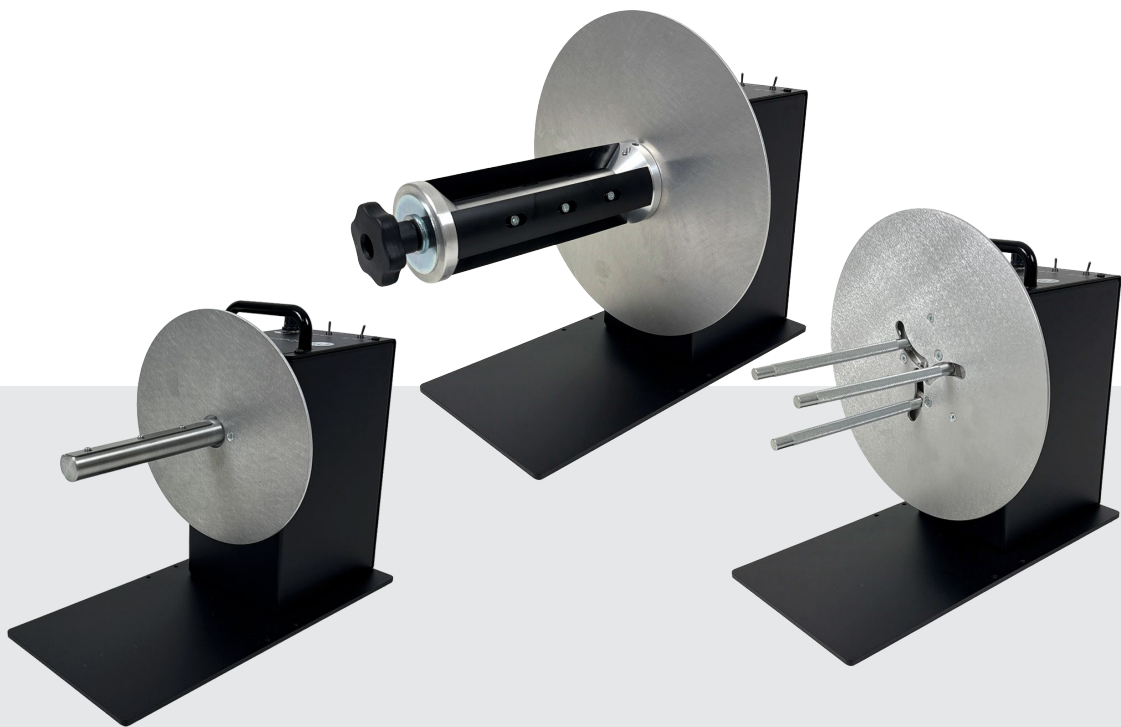




THE WORLD'S LEADING MANUFACTURER OF LABEL DISPENSERS,
REWINDERS, UNWINDERS, SLITTERS & COUNTING SOLUTIONS



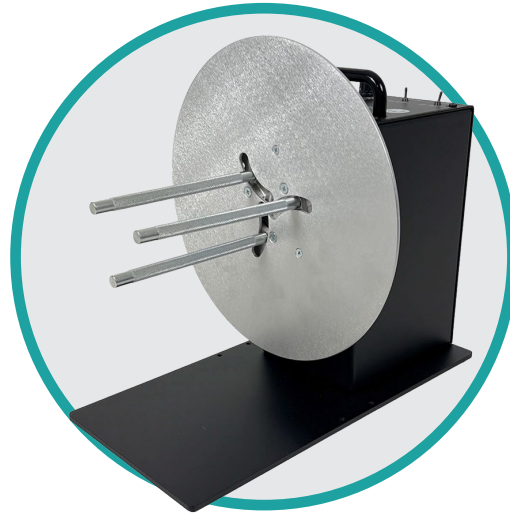
HEAVY DUTY REWINDERS CAT-3

Label Rewinders

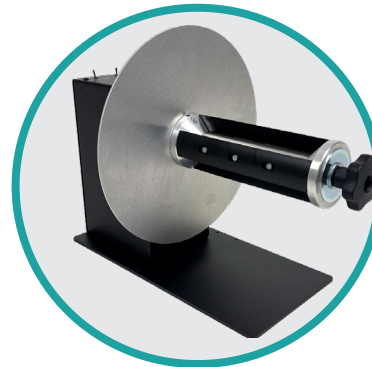
HEAVY-DUTY REWINDERS CAT-3

"CAT" (Constant Adjustable Torque™) has made these quiet, easy-to-use rewinders the industry standard. With various core sizes, label widths, roll diameters and options to choose from, there is a rewinder to fit any job you may have.

- ✓ Small footprint to fit on any desk
- ✓ Easy setup: attach the labels to the take-up core and ready to start
- ✓ Speed up to 125cm/sec to work with the fastest barcode printers available on the market
- ✓ Bi-Directional for internal & external winding
- ✓ Large capacity for roll diameters up to 300mm



CAT-3-ACH



CAT-3-CHUCK

GENERAL

- Power Supply: Input: 100-240V – 50Hz
Output: 15VDC – 4.33A.
- Limited Warranty of 2 years, 1 Year Warranty on the Power Supply

FEATURES

- Settings for Torque/speed and direction via the Control Panel
- CAT-3 with custom build heavy-duty & silent motor. Max. Speed: 125 CM/SEC at the beginning of a 76 mm core roll
- The CAT-3-Standard has a vane-style core Holder
- The CAT-3-ACH employs an adjustable core holder enabling the use of varying core sizes, for maximum flexibility
- The CAT-3-CHUCK includes a quick-locking "Quick-Chuck" core chuck permitting the fastest loading and unloading of cores and label rolls
- CHUCK/STANDARD/10-INCHES models come standard for using cores in 76mm. On request available in 38/40/44/50/70 mm.

CAT-3 MODELS

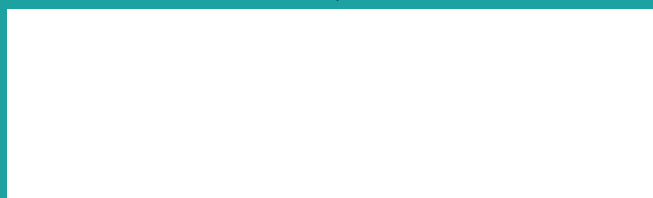
P/N	MODEL	DESCRIPTION	MAX LABEL WIDTH	MAX ROLL DIAM	MAX WEIGHT
LMR004	CAT-3-STANDARD	Standard for 76mm cores (38/40/44/50/70/100mm available) Size W x D x H:300 x 350 x 320 mm	155 mm	300 mm	8 KG
LMR005	CAT-3-ACH	Adjustable Core Holder for using any core diameter between 25 & 101 mm Size W x D x H:280 x 310 x 310 mm	155 mm	280 mm	7 KG
LMR006	CAT-3-CHUCK	Easy-Loading Quick-Chuck for 76mm cores (38/40/44/70mm available) Size W x D x H:300 x 385 x 320 mm	170 mm	300 mm	10 KG
LMR006/ LMX484	CAT-3-CHUCK	Easy-Loading Quick-Chuck for 76mm cores Size W x D x H:300 x 435 x 320 mm	220 mm	300 mm	10 KG
LMR006/ LMX485	CAT-3-CHUCK	Easy-Loading Quick-Chuck for 76mm cores Size W x D x H:300 x 485 x 320 mm	270 mm	300 mm	10 KG
LMR007	CAT-3-10-INCHES	Standard for 76mm cores (38/40/44/50/70mm available) Size W x D x H:300 x 455 x 320 mm	255 mm	300 mm	10 KG
LMR008	CAT-3-1-INCH	For 25,4mm cores Size W x D x H:220 x 350 x 280 mm	155 mm	220 mm	8 KG

CAT-3 OPTIONS

P/N	MODEL	DESCRIPTION
LMX444	APG-CAT	Adjustable Paper Guide, Guides the outer edge of the label web to ensure an even roll edge.
LMX579	UNIVERSAL- ALIGNMENT PLATE for any desktop Thermal Transfer printer	
LMX491	STANDARD SHAFT	Standard shaft with vanes, internal and external flanges
LMX492	10" SHAFT	10-Inches shaft with vanes, internal and external flanges.
LMX500	ACH-CAT	Adjustable Core Holder for any core size from 25 to 101mm. With inner flange.
LMX501	BAIL STD	For rewind on shaft. No core is needed.
LMX502	BAIL 10"	For rewind on 10-inches shaft. No core is needed
LMX472	FOOT SWITCH	To start and stop the unit
LMX546	1' SHAFT	1 Inch shaft with vanes, internal and external flanges



Your local partner:



+32 2 375 69 60

brussels@labelmate.com

Bergensesteenweg 78

1651 Lot (Belgium)

www.labelmate.com