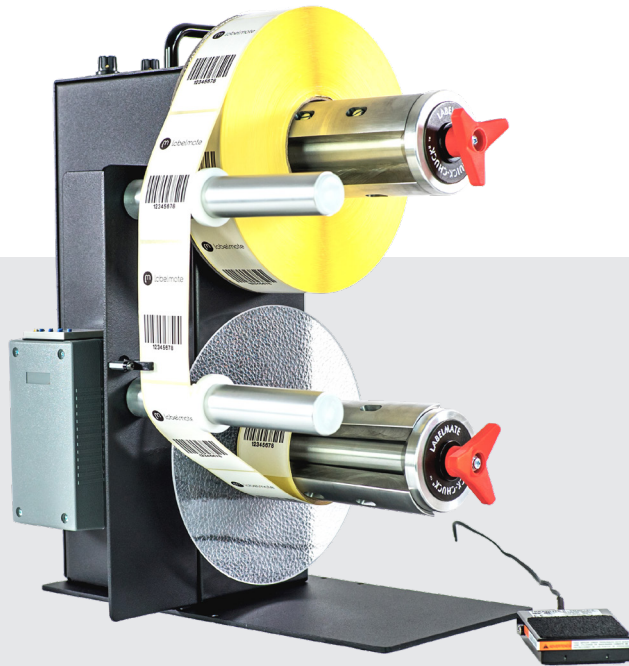




THE WORLD'S LEADING MANUFACTURER OF LABEL DISPENSERS,
REWINDERS, UNWINDERS, SLITTERS & COUNTING SOLUTIONS



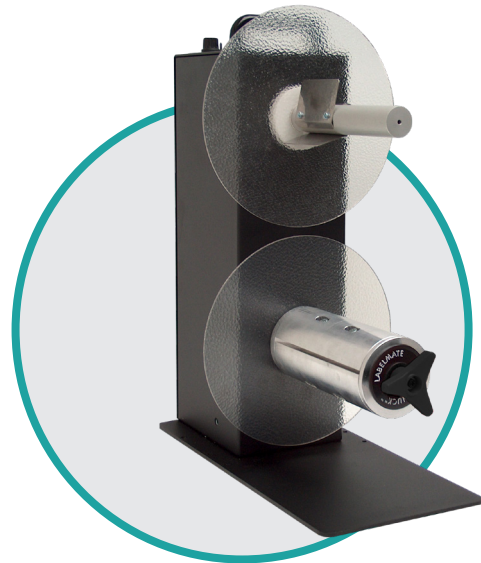
TWIN-CAT-2

labelmate.com

Dual Spindle Station

The Dual Spindle TWIN-CAT-2 is a fast and easy way to deliver label rolls the way you want them! With various label widths and core diameters along with Inspection and Counting options, this all-in-one rewind/unwind Station is the ideal solution for in-house label roll conditioning.

- ✓ Waste matrix removal from die-cut labels inline with your printer or off-line
- ✓ Inside wound to outside wound applications
- ✓ Reverse the order of serialized labels
- ✓ Rewind labels on a different core size
- ✓ Wind small rolls of labels from larger ones
- ✓ Rewind a specific quantity of labels with the optional inspection and pre-set counter options



FEATURES

- 2 Powerful motors, Bi-Directional Unwinding & Rewinding
- 100+ possible configurations to handle any job
- Control Panel for setting direction & speed/torque for each spindle independently
- External Halt Control: Stop/start the unit with foot switch or other device
- Max. Speed: 125 CM/SEC at the beginning of a 76 mm core roll
- Max Label Roll weight: 2 x 5KG
- STANDARD/10-INCHES models come standard for using cores in 76mm. On request available in 38/40/44/50/70/100 mm. See pages 37 & 38 "Chucks and Vanes" for item configuration
- STANDARD/1-INCH & 10-INCHES models come standard with inner & outer flanges. We recommend to add optional APG-CAT to the ACH, 1-INCH and CHUCK models with other diameter than 76mm
- Roll Diameter: 2 x 220mm

DIMENSIONS

- W x D x H: 180 x 370 x 470 mm
- Shipping Weight: 20 KG, depending on configuration and options

GENERAL

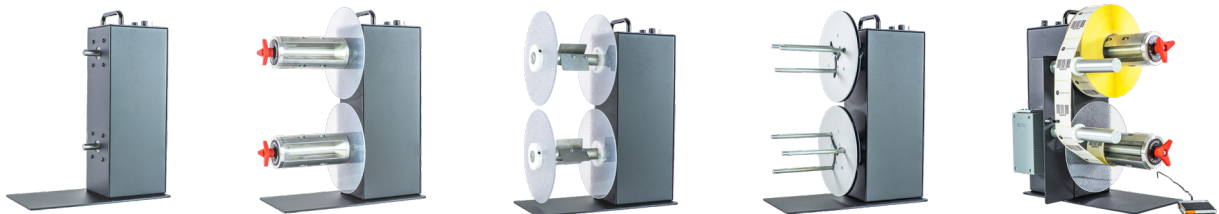
- Power Supply Input: 230V-50Hz Output: 15VDC – 4.6A
- Limited Warranty of 2 Years, extendable to 5 Years, 1 Year on the Power Supply

TWIN-CAT-2-BASE-UNIT

P/N	MODEL	DESCRIPTION
LMR016	TWIN-CAT-2 BASE-UNIT	TWIN-CAT-2, Base-Unit without any core holder

SELECT 2 CORE HOLDERS

P/N	MODEL	DESCRIPTION	MAX LABEL WIDTH
LMX460	1-INCH	25,4 mm (1") standard shaft and flanges.	155 mm
LMX461	STANDARD	Standard shaft with vanes and flanges.	155 mm
LMX462	10-INCHES	Standard shaft with vanes and flanges.	255 mm
LMX463	ACH-TWIN	Adjustable core holder shaft for cores from 25 to 101 mm. * cannot be mixed with another type.	155 mm
LMX464	CHUCK – C-76170	Quick-Chuck shaft in 76 mm core diameter and 170 mm length and inner flange.	170 mm
LMX465	CHUCK – C-76220	Quick-Chuck shaft in 76 mm core diameter and 220 mm length and inner flange.	220 mm
LMX466	CHUCK – C-76270	Quick-Chuck shaft in 76 mm core diameter and 270 mm length and flanges.	270 mm
LMX600	CHUCK – C-38170	Quick-Chuck shaft in 38 mm core diameter and 170 mm length and inner flange.	170 mm
LMX601	CHUCK – C-40170	Quick-Chuck shaft in 40 mm core diameter and 170 mm length and inner flange.	170 mm
LMX557	CHUCK – C-44170	Quick-Chuck shaft in 44 mm core diameter and 170 mm length and inner flange.	170 mm

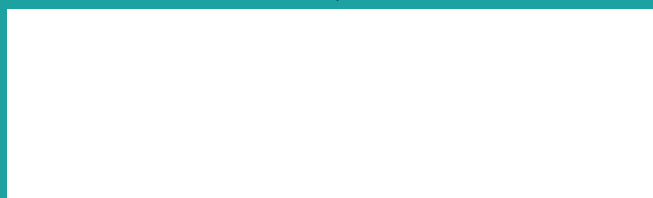


TWIN-CAT-2-OPTIONS

P/N	MODEL	DESCRIPTION
LMX470	INSP-1	Bracket with 2 rollers, mounted on the side of the TWIN-CAT. Select this option for Matrix Removal on OKI-type colour printer
LMX471	INSP-1 +PC-1	Pre-set Counter with adjustable sensor sensitivity, pre-mounted onto the INSP-1 Bracket, ready to plug in and use
LMX472	FOOT SWITCH	Foot Switch to start/stop the TWIN-CAT-2
LMX473	OUTER FLANGE	220 mm outer flange for Quick-Chuck in 76 mm



Your local partner:



+32 2 375 69 60

brussels@labelmate.com

Bergensesteenweg 78
1651 Lot (Belgium)

www.labelmate.com